

Infrared Touchless Switch (J-Wave)

User Manual



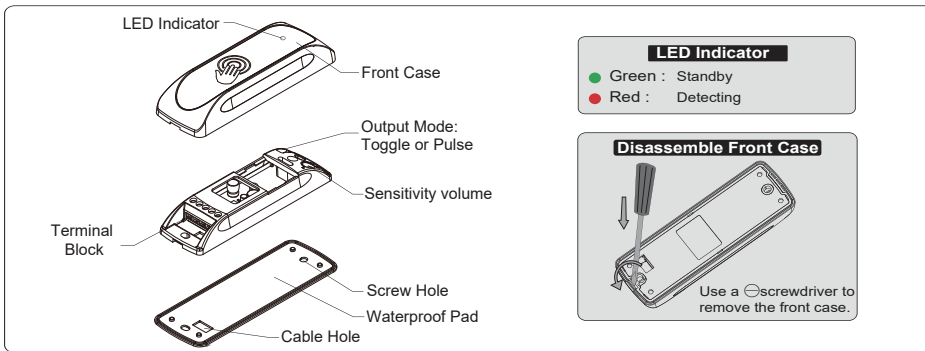
The J-Wave is a highly sensitive, high performance switch designed to activate automatic doors by detecting the movement of a person or object. For the safe and accurate use of this product, please read this instruction manual carefully.



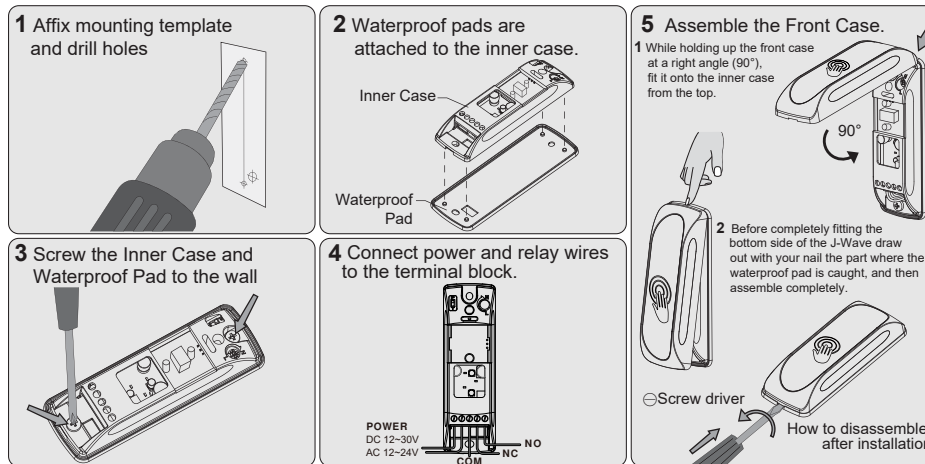
1 Technical specifications

Composition	Proximity Sensor Switch	1EA
	Cable	1EA
	Mounting Template	1EA
	Screw	2EA
	User Manual	1 Copy
Specification	Power Supply	DC12~30V, AC12~24V
	Dimensions	40mm x 117mm x 19.5mm (W x L x H)
	Technology	Active Infrared
	Detection Range	10~30cm ±3~5cm
	Detection Mode	Motion
	Output	Relay Contact (1A/30VDC)
	Output Hold Time	1~2 Sec. (PULSE mode)
	Current Consumption	< 1.5W
	Operating Temp/Humidity	-20°C~+50°C / 0~90%
	International Protection	IP54

2 General Information

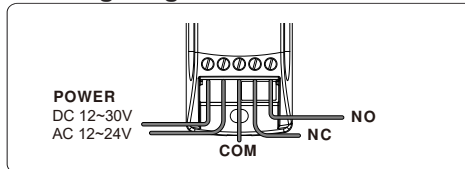


3 Installation Guide

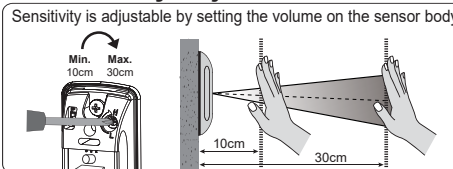


Caution | Do not supply power during installation. Do not disassemble or modify the device, it may cause fire or electric shock

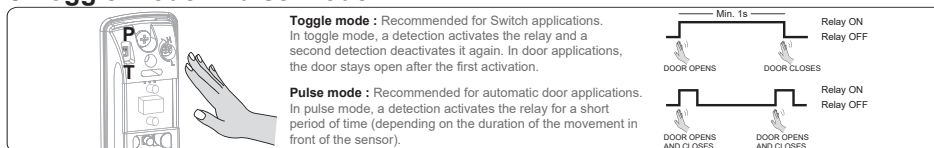
4 Wiring Diagram



5 Sensitivity Adjustment



6 Toggle mode / Pulse mode



7 Mounting Information

